

**Report of the Assistant Chief Executive (Customer Access and Performance )**

**Report to West (Outer) Area Committee**

**Date: 16<sup>th</sup> December 2011**

**Subject: Annual Community safety Report**

Are specific electoral Wards affected? If relevant, name(s) of Ward(s): Calverley & Farsley, Farnley & Wortley, Pudsey Wards	<input checked="" type="checkbox"/> Yes	<input type="checkbox"/> No
Are there implications for equality and diversity and cohesion and integration?	<input type="checkbox"/> Yes	<input checked="" type="checkbox"/> No
Is the decision eligible for Call-In?	<input type="checkbox"/> Yes	<input checked="" type="checkbox"/> No
Does the report contain confidential or exempt information? If relevant, Access to Information Procedure Rule number: Appendix number:	<input type="checkbox"/> Yes	<input checked="" type="checkbox"/> No

**Summary of main issues**

1. This report provides crime statistics for Outer West Leeds and details of key activity to address crime and anti social behaviour issues.

**Recommendations**

2. The Area Committee is asked to:
  - note the report and offer comment

**1 Purpose of this report**

- 1.1 This report is the annual community safety report, providing Members with details of the community safety activity undertaken during the last 12 months. The report will also provide details of crime data, making comparisons with previous year.

**2 Background information**

- 2.1 A number of factors have a bearing on crime, criminologists have placed these factors into three broad categories:
  - A suitable target or opportunity, for example: valuable items which can be removed relatively easily such as laptops near an open window, vehicles with unlocked doors and a valuable item on show, etc

- A motivated offender, for example: someone whose values or beliefs make stealing acceptable, drug dependency, someone motivated by greed, etc
- A low likelihood of getting caught, for example: no Police or security guards, a neighbourhood with a low level of reporting crime, no natural street surveillance, etc

2.2 Traditional problem solving techniques aim to reduce crime by impacting on these three categories:

- Working to educate the victim (leaflet drops, face to face crime prevention advice, etc)
- Tackle the offender (known as offender management; visit known offenders, tenancy action, curfews, criminal sanctions – prison, etc)
- Undertake community based work to improve natural surveillance such as community engagement and capacity building to increase reporting (eg neighbourhood watch), environmental works such as cutting hedges back, secure by design, etc)

2.3 However it should be acknowledged that other factors also have a bearing on crime;

- Seasons
- Weather
- Release of offenders
- Location
- Population

2.4 It is also important to note that one offender can commit many offences in a short period of time and this can lead to significant increases in crime figures. For example, where six cars are damaged in a street, this would lead to six reports of criminal damage.

2.5 Community Safety Service Priorities for 2011 – 2012 are:

- People are safe and feel safe in Leeds
- Tackling burglary and anti – social behaviour
- Working closer with partners and communities in neighbourhoods and the city centre to tackle community safety priorities and improve local delivery
- Supporting the most vulnerable people, especially those affected by domestic violence and young people with the greatest needs
- Developing joint intelligence and information sharing, including use of CCTV and security services and improving the focus on Integrated Offender Management
- Using partnership resources wisely

## **Summary of key Actions**

- 2.6 The North West Divisional Community Safety Partnership is a multi agency partnership chaired by the Police and West North West Homes and includes partners from Fire Service, Leeds University, Youth Service, Youth Offending Service, Safer Leeds and Community Safety Lead Member representatives from each of the four Area Committees in West North West. The Partnership meets four times a year and sets the strategic direction for partnership work, examining performance and agreeing priorities. The work of the group is accountable to the Safer Leeds executive, who receives regular reports of the activity undertaken.
- 2.7 The following key actions have been delivered through the Divisional Community Safety Partnership during the last 12 months:
- 2.8 Multi Agency Tasking. This group meets monthly and it's membership includes; Safer Leeds (Co-chair), Police (Co-chair), Area Management, West North West Homes, Fire Service, Youth service, Attendance Management, Youth Offending Team Environmental Action Team, Signpost, Pudsey Town Centre Manager and Leeds Anti Social Behaviour Team (LASBT). The group aims to direct partnership resources to tackle the priorities set by the Divisional Partnership and from local agency intelligence. The tasking meetings include Environmental priorities that have an impact on Neighbourhoods.

### **Examples of the work undertaken by the Multi Agency Tasking group during the period January 2011 November 2012 includes:**

## **3 Burglary**

Burglary remains a priority for the North West Division and Safer Leeds partnership with additional resource allocated to reduce burglary across the city. An appendix 1 2, and 3 provide a break down of burglary for the Outer West wards.

The chart below shows the ranking of wards for burglary across the city and highlights the Localities of concern. Currently there are no wards in Outer West that are localities of concerns however the Farnley and Wortley ward have seen an increase in burglary during September and October. Additional resources which include extended tours of duty from 6 PM – 6AM and the targeted of known offenders has resulted in some positive reduction in the burglary figures for November.

During 2011 there have been a number of targeted operations to tackle burglary and other crime types and examples of some of the partnership work are listed below.

Ward	Nov-10	Dec-10	Jan-11	Feb-11	Mar-11	Apr-11	May-11	Jun-11	Jul-11	Aug-11	Sep-11	Oct-11	12 Month Total	Colour Key
Hyde Park & Woodhouse	Very High Concern	High Concern	High Concern	High Concern	High Concern	High Concern	High Concern	Some Concern	High Concern	High Concern	High Concern	High Concern	557	Very High Concern High Concern Some Concern Low Concern Strategic Area
Burmantofts & Richmond Hill	Very High Concern	High Concern	High Concern	High Concern	High Concern	High Concern	High Concern	Some Concern	High Concern	High Concern	High Concern	High Concern	556	
Armley	Very High Concern	High Concern	High Concern	High Concern	High Concern	High Concern	High Concern	Some Concern	High Concern	High Concern	High Concern	High Concern	502	
Bramley & Stanningley	Very High Concern	High Concern	High Concern	High Concern	High Concern	High Concern	High Concern	Some Concern	High Concern	High Concern	High Concern	High Concern	493	
Kirkstall	Very High Concern	High Concern	High Concern	High Concern	High Concern	High Concern	High Concern	Some Concern	High Concern	High Concern	High Concern	High Concern	485	
Headingley	Very High Concern	High Concern	High Concern	High Concern	High Concern	High Concern	High Concern	Some Concern	High Concern	High Concern	High Concern	High Concern	470	
Chapel Allerton	Very High Concern	High Concern	High Concern	High Concern	High Concern	High Concern	High Concern	Some Concern	High Concern	High Concern	High Concern	High Concern	417	
Killingbeck & Seacroft	Very High Concern	High Concern	High Concern	High Concern	High Concern	High Concern	High Concern	Some Concern	High Concern	High Concern	High Concern	High Concern	396	
Farnley & Wortley	Very High Concern	High Concern	High Concern	High Concern	High Concern	High Concern	High Concern	Some Concern	High Concern	High Concern	High Concern	High Concern	391	
Gipton & Harehills	Very High Concern	High Concern	High Concern	High Concern	High Concern	High Concern	High Concern	Some Concern	High Concern	High Concern	High Concern	High Concern	390	
Temple Newsam	Very High Concern	High Concern	High Concern	High Concern	High Concern	High Concern	High Concern	Some Concern	High Concern	High Concern	High Concern	High Concern	360	
Cross Gates & Whinmoor	Low Concern	High Concern	High Concern	High Concern	High Concern	High Concern	High Concern	Some Concern	High Concern	High Concern	High Concern	High Concern	311	
Weetwood	High Concern	High Concern	High Concern	High Concern	High Concern	High Concern	High Concern	Some Concern	High Concern	High Concern	High Concern	High Concern	311	
Pudsey	Low Concern	High Concern	High Concern	High Concern	High Concern	High Concern	High Concern	Some Concern	High Concern	Very High Concern	High Concern	High Concern	298	
Moortown	High Concern	Low Concern	High Concern	High Concern	High Concern	High Concern	High Concern	Some Concern	High Concern	High Concern	High Concern	High Concern	287	
Roundhay	High Concern	High Concern	High Concern	Low Concern	High Concern	High Concern	High Concern	Some Concern	High Concern	High Concern	High Concern	High Concern	285	
Calverley & Farsley	High Concern	High Concern	High Concern	High Concern	High Concern	High Concern	High Concern	Some Concern	High Concern	High Concern	High Concern	High Concern	270	
Horsforth	Low Concern	High Concern	High Concern	High Concern	High Concern	High Concern	High Concern	Some Concern	High Concern	High Concern	High Concern	High Concern	223	
City & Hunslet	High Concern	High Concern	High Concern	High Concern	High Concern	High Concern	High Concern	Some Concern	High Concern	High Concern	High Concern	High Concern	197	
Middleton Park	High Concern	High Concern	High Concern	High Concern	High Concern	High Concern	High Concern	Some Concern	High Concern	High Concern	High Concern	High Concern	187	
Beeston & Holbeck	High Concern	High Concern	High Concern	High Concern	High Concern	High Concern	High Concern	Some Concern	High Concern	High Concern	High Concern	High Concern	179	
Adel & Wharfedale	High Concern	High Concern	High Concern	High Concern	High Concern	High Concern	High Concern	Some Concern	High Concern	High Concern	High Concern	High Concern	178	
Alwoodley	High Concern	High Concern	High Concern	High Concern	High Concern	High Concern	High Concern	Some Concern	High Concern	High Concern	High Concern	High Concern	177	
Morley North	High Concern	High Concern	High Concern	High Concern	High Concern	High Concern	High Concern	Some Concern	High Concern	High Concern	High Concern	High Concern	151	
Garforth & Swillington	High Concern	High Concern	High Concern	High Concern	High Concern	High Concern	High Concern	Some Concern	High Concern	High Concern	High Concern	High Concern	142	
Otley & Yeadon	High Concern	High Concern	High Concern	High Concern	High Concern	High Concern	High Concern	Some Concern	High Concern	High Concern	High Concern	High Concern	129	
Guiselley & Rawdon	High Concern	High Concern	High Concern	High Concern	High Concern	High Concern	High Concern	Some Concern	High Concern	High Concern	High Concern	High Concern	118	
Morley South	High Concern	High Concern	High Concern	High Concern	High Concern	High Concern	High Concern	Some Concern	High Concern	High Concern	High Concern	High Concern	116	
Rothwell	High Concern	High Concern	High Concern	High Concern	High Concern	High Concern	High Concern	Some Concern	High Concern	High Concern	High Concern	High Concern	106	
Harewood	High Concern	High Concern	High Concern	High Concern	High Concern	High Concern	High Concern	Some Concern	High Concern	High Concern	High Concern	High Concern	104	
Kippax & Methley	High Concern	High Concern	High Concern	High Concern	High Concern	High Concern	High Concern	Some Concern	High Concern	High Concern	High Concern	High Concern	100	
Ardsley & Robin Hood	High Concern	High Concern	High Concern	High Concern	High Concern	High Concern	High Concern	Some Concern	High Concern	High Concern	High Concern	High Concern	85	
Wetherby	High Concern	High Concern	High Concern	High Concern	High Concern	High Concern	High Concern	Some Concern	High Concern	High Concern	High Concern	High Concern	69	

3.1 **Operation Alamo** focussed on reducing burglaries in Inner & Outer West Leeds during February which targeted known burglars in the North West Division.

3.2 **Operation Absinthe** Commenced in March continued through to the end of the April. Police targeted burglars in the early hours of the morning. The tactics included Support from the mounted section and operational support officers during the afternoons to combat the afternoon/early evening offences.

There was a focus on a group of known criminals who are being targeted by pro active measures which include extended tours of duty until 6am. The majority of the burglaries took place in the early hours of the morning. In the West Outer wards the favoured modus operandi is that of attacking the euro profile locks with mole grips. There also continued to be a number of “sneak in” offences where opportunist thieves are presented with insecure doors and windows.

There were significant arrests of two well known local criminals who were remanded into custody following their arrest. One young man from Bramley admitted in excess of 15 house burglaries committed in Bramley and Swinnow. Another Swinnow based criminal was charged with offences which have occurred across the city in a number of wards. This serves to illustrate that cross border offending occurs with regularity. To counter this issue the newly formed Leeds District Burglary Task Force was established to focus on offenders who operate across ward and

divisional boundaries. The effectiveness of this team will be judged in the months to come.

**Operation Alice 1 and 2** – has been a further pro active initiative run in the autumn and early winter. Again NPT staff have deviated their tours of duty to work 1800 – 0600. The month of November has seen a reduction in the number of recorded burglary dwellings and theft from motor vehicles. There is no doubt that this success has been due to the persistent targeting and disruption of known offenders.

3.4 **Darker Nights Plan** – A Darker nights plan was launched in October to coincide with the changing of the clocks and darker nights. A package of measure are being implemented which include Timer Light Switches funded from Community Safety, the Bobby in the Lobby events, leaflets and also merchandise funded by the Outer West Area Committee which are being targeted in hot spot areas and events such as local forums and PACT meetings. Events have been held at Pudsey market and Asda Owlcotes during the October half term to raise awareness of home security to local communities. Further events are being organised during November and December. The plan also focuses on the management of offenders within the North West Division and links into the city-wide burglary team particular with prison releases before Christmas.

3.5 **Target Hardening** – Funding of £10000 from the Outer West Area Committee and £2,000 from West North West Homes has supported a target hardening project in Outer West. Extensive work has been done to identify the most burgled streets in Outer West by the Intelligence unit analyst over the last 6 months. This data has been used to offer target hardening packages to vulnerable locations in the Outer West wards. To date target hardening has been completed in Pudsey, Calverley and Farsley Ward with Farnley/Wortley ward to follow. Where people are able to contribute to the costs of enhanced security to their property a contribution is requested of £50, excluding tenants of West North West Homes Leeds. This has proved very successful.

### 3.6 **Offender Management**

As part of the Offender Management strand of the Burglary Reduction Plan for Inner West a Multi-agency Offender Management case conferencing meeting has been established targeting offenders who are impacting on burglary in the Armley and Bramley area. The aim is to case manage around 12 individuals that have been identified by the Divisional Intelligence Unit /Youth Offending Service and other partners agencies who pose a higher level of risk of offending /committing burglary but are not at the level of offending for the Intensive Offender Management Programme . A profile of each individual identified and action plan has been drawn with agreed actions and outcomes. This initiative is to be rolled out to included young people from across West Leeds during 2012.

3.7 The Police have held a briefing with Environmental Action Team staff which included street cleansing services and are in the process of building up links with local Police and PCSO's to enable staff to share any information that they may have from working out in the communities most of the day. The Inner and Outer NPT with partners such as Dogs Trust, Leeds City Council has developed and launched a Dogs Watch scheme on 29th October. The aim of Dog Watch is for dog owners to report any thing suspicious or area of environmental concern that they

may come across whilst walking there dogs thought a telephone contact number or email address. To date over 100 dog owners has signed up for the project.

### **3.8 Vehicle Crime**

- 3.9.1 **Operation Alligator** was a team of 8 officers put together to deal with the rise in vehicle crime earlier in 2011. Since its introduction it has seen the reduction in car crime across the division.

The team have had success with the capture car in Pudsey and Farnley, which resulted in the arrests of Terrence Ponsonby, Anthony Evans, Jacob West, Ben Day and Ben Sherwin. All of these individuals were convicted at court and as such they are a matter of public record.

There has been fresh impetus regarding vehicle crime and burglary in Pudsey during 2011, in particular theft from motor vehicles in ward 28 centre Pudsey. A pro active approach has been taken where increased disruption of criminals has taken place. This attrition sits alongside the deployment of the capture car.

- 3.10 **Operation Absinthe** - The Wortley and Farnley ward saw a rise in the number of cars being broken into. As part of Operation Absinthe officers worked into the early hours targeting a known man who returned to the area having been living in Merseyside. He has been arrested on a number of occasions in relation to theft from motor vehicles there have been some significant success in the Farnley and Wortley ward. The capture car which was funded by the elected members proved to be a valuable commodity once more.

The Stonebridges area and the Gala Bingo Car Park as a particular hotspot and had been locations where cars had been broken into and small items stolen such as Sat Nav devices. The capture car deployed to this location and was broken into on the 2<sup>nd</sup> June and a local man was arrested who was sentenced at court.

- 3.11 The anti-theft screw kits for car registration plates funded from Community Safety are now available. An event was organized for Saturday 26<sup>th</sup> February at Owlcotes Centre to promote the kits. This had an impact on this crime type and provided a valuable opportunity to engage people in discussion around crime prevention measures.

### **3.12 Capture Technology.**

- 3.13 This project uses high tech equipment to track and trace stolen property. The project includes capture cars where satellite navigators are left on display, houses set up to look like they are occupied with a laptop on display, or bicycles; the items in question contain tracking equipment or software which is used to track where stolen items are taken. The project has had successful outcomes, leading to offenders pleading guilty earlier because of the weight of evidence against them. Valuable evidence is also gained about where stolen goods are taken and the action taken against those receiving and handling stolen goods. The team is currently in the process of purchasing 2 sets of covert cameras to be deployed in ASB hotspots to capture information about those involved in anti social behaviour such as arson, graffiti, rubbish dumping, etc

Covert work in Pudsey resulted in the arrest of known criminals for theft from motor vehicle. There are a group of young men who are breaking into cars and these are being targeted by the Police and Leeds Anti-Social Behaviour Team with a bolt on ASBOs following conviction of a known nominal and prohibited from association with known nominals.

The capture car continues to be deployed to the Wortley and Farnley ward in particular as these areas see the higher levels of vehicle crime. The last activation of the capture car saw Matthew Coates from the Stonebridges area being charged and convicted for the offence. The capture technology continues to be a valuable tool in tackling offenders.

### **Capture House**

The capture house funded by the outer West Area Committee continues to be utilised at locations identified by the Divisional Intelligence Unit as hot spot areas. To date there has been no activation at the capture house and its location remains confidential.

- 3.14 **Speed Indicator Devise, (SID)** known as Smiley Sid - Funded by the Outer West Area Committee. The SID has been used in streets identified by members of the public through the Police Pact meetings, neighbourhood watches, ward forums or other groups. The PCSOs will use the SID in these streets and report any streets of concern to the enforcement section for additional attention. The devise can also be used with schools to raise awareness and raise people's consciousness of the impact that speeding can have on road accidents/ casualties.

Since the purchase of the devise the Smiley Sid has been deployed to a variety of locations. Its most favoured use is at primary schools where engagement takes place with the school community. Many local priorities for the public remain based around speeding issues and the roads outside primary schools are hot spots for such inconsiderate driving.

### **3.15 Anti- Social Behaviour**

#### **3.16 Farnley and Wortley Ward**

Extensive work regarding Anti Social Behaviour on Nutting Grove Terrace / Bawns has been a focus for partnership work in Farnley. A spate of small fires linked to Anti Social Behaviour has now come to an end. Good work has been done by the police officers with arrests made of perpetrators. The Arson task force have done work in Farnley High School regarding education over fires. West North West Homes have been working with groundwork to make environment improvements to the area which included the gating of Archways on Nutting Grove Terrace which were a constant location for ASB calls and activities.

The dismantling of an enormous cannabis factory in Wortley, the biggest discovered in the year in the entire county. Approx 3,000 mature cannabis plants with a value approaching just short of a million pounds - this was "bagged and tagged" by the local NPT.

### **3.17 Pudsey Ward**

Extensive work regarding a Pudsey resident took place who presented as a significant Anti-Social Behaviour perpetrator. A problem solving partnership approach was adopted to deal with this man, an arrest was made and on going work with housing and negotiations with mental health services, took up a lot of staff time. This man now lives in East Leeds following him being re housed.

There has been some damage to the play surface of Pudsey Park. Joint work with Park and Country Side, Area Management, the police and Environmental action team have focussed resources in this locality and partners are currently looking at CCTV coverage from one of the metro cameras. Other partnership work in Pudsey focus on Pudsey Town Centre which will include repeat litter and enforcement Patrols with PCSO's with the addition of duty of care inspections regarding commercial waste, obstructions of the highway with advertising "A Boards" and the consideration of Litter Control Orders for excess accumulations of branded litter where necessary.

During October there has been an increase in incidents of anti social behaviour around the Owlcotes area. The police and the Leeds Anti Social Behaviour Team have issued a number of Acceptable Behaviour Contracts (ABC) and are progressing an Anti-social Behaviour Order on 1 individual.

Following a multi-agency approach to issues and concerns in relation to loose and tethered horses in the Tyersal /Leeds and Bradford boundary area, progress has been made with the landowner at Tyersal farm, and a stock proof fence has now been erected. This has prevented the horses escaping onto the playing fields/park and highway.

### **3.18 Calverley/ Farsley Ward**

Concerns about anti-social behaviour in Farsley in particular around the Farfield shops have been addressed. A partnership meeting was held on 6<sup>th</sup> May to agree action to ensure that the complaints of anti-social behaviour are address before they escalate. A number of actions were agreed around individuals and their families, some of these being that the neighbourhood Police Team would increase patrols in this area and utilise the headcams, youth services to engage with young people around issues of behaviour with the Safer Schools Officer within Priesthorpe schools. This has resulted in reduced incidents of anti-social behaviour in this area. Currently the multi-agency partnership is looking at funding a CCTV in the location of the Farfield shops to provide reassurance and capture any incidents of crime and ASB in that location.

A railing project is being implemented near to Red Lane in Farsley to prevent ASB and incidents of graffiti adjacent to a ginnel , and a further ginnel has been cleaned up behind Farsley Celtic and is being monitored by the PCSO's

### **3.19 Stolen Goods Market**

Operation Bulleye is a city wide city-wide initiative to tackle the stolen good market The local cash converters type premises, and jewellery shops are regularly targeted and books checked by the PCSO's in Bramley and Armley The North West Division have been conducting covert operations to tackle the stolen goods market and in particular the disposal of stolen jewellery. A number of cash converters/second hand



jewellery premises have been targeted within the North West Division. The operations are in the earlier stages but are already yielding some positive results.

### **3.20 Metal Theft**

The theft of metal is on the increase and actions have been taken by West Yorkshire Police to educate people about some of the risk associated with metal theft through the media, public meetings and as well as operations aimed at disruption of nominals through stop and searches of vehicle carriers. A number of metal theft dealers have also been visited within the West Leeds area by the police and Environmental Enforcement Officers to check their records, and to make sure that all scrap metal transactions are translucent and made aware of the consequences if they are not. Scrap metal dealers have been visited and all owners attend a meeting on 13<sup>th</sup> July at Pudsey Police Station. Out of 10 scrap metal dealer invited 3 turned up and they were given a briefing and a pack of photo to identify people who are selling stolen goods and to deter them from purchasing stolen metal

### **3.21 Operation Champion Action Day**

An action day took place focussing on the Nutting Grove / Bawns Terrace on 31st March 2011 to provide reassurance to the community about what the police and partners are doing to tackle local concerns in relation to crime and anti-social behaviour. Crime prevention leaflets along with advice about how to dispose of household/garden waste were distributed. The environmental services focused on litter picking on the Bawns and clearing up of waste around some of the ginnels with the unpaid service team. The action day received a positive response from local residents. Permission has been granted to gate the arches on the Nutting Groves and this work will be undertaken following a 28day notice period.

### **3.22 Cross Boarder Operations Between Leeds and Bradford**

Dealing with local priorities in partnership defines the work of Neighbourhood Policing Teams, cut across divisional, NPT and county council boundaries. The priorities range from those at a local level: such as problems relating to illegal waste traders, fly tipping or theft of scrap metal to divisional priorities such as burglary. These issues (and others) affect the quality of life of residents in both Leeds and Bradford, and are regularly raised at community forums and meetings held across both divisions.

During 2012 three operations have taken place to tackle these issues

Operation Satterthwaite 23<sup>rd</sup> & 24<sup>th</sup> March, Operation Agnew 21<sup>st</sup> & 22<sup>nd</sup> July  
Operation Algorithm North West Leeds Bradford South Thursday 1<sup>st</sup> September 2011.

The operations took place just off the Thornbury Roundabout on the Gallagher leisure Park. The operation was aimed at dealing with travelling criminals utilising network links between Bradford South and North West Neighbourhood Police teams (NPT). Joining each NPT were Bradford Council, Leeds Council and a number of partner agencies including VOSA, HMRC, Taxi Enforcement, Environment Enforcement, Civilian Warrants, British transport Police, Yorkshire Electricity British Telecom.

To date the over the total of 5 days of action has shown excellent results.

25 Arrests

40 fixed penalty Notices Issued

8 cars seized for No Insurance

Over 450 vehicles stopped with links to burglary, Drugs, thefts

57 Vehicles found to be speeding

132 Vehicles contravening an Access Only Road

150 Commercial Vehicles Stopped

83 Notices requesting proof of lawful waste disposal

13 Notices served Under the Control of Pollution Act

5 vehicles reported for pollution

13 Immediate prohibition notices re roadworthy condition of vehicles

10 delay prohibition notices

114 hackney taxis stopped, 17 Licences suspended,

24 Civil Warrants found and paid £2236.67

7 vehicles found with Red/Black Diesel

5 reported Offence of allowing a horse to stray onto a public Highway

2 warning notices served

1 horse reported to the RSPCA

Other activity included visits to all scrap dealers were visited in the Bradford South and Outer and Inner West area. Police officers attended in the company with representatives from Network Rail, Yorkshire Electricity, Smartwater and the Environmental Agency. In total £20,000 worth of identifiable cable was found across two sites which have been impounded for further investigation, or recovered by the lawful owners. This cable was found to belong to Network Rail, YEDL and British Telecom.

Overall the operations were a huge success with each agency making a significant impact on the total results achieved, along with the subsequent statement made that each Neighbourhood Police Team divisions and partner agencies across the boarders will continue to work together during 2012 to tackle the issues which affect our communities.

### **3.23 Community Engagement & Reassurance**

Inspector Cawkwell was involved in heading up the launch of "Faithwatch" in the division which is similar to neighbourhood watch. The aim is to get Faithwatch leaders / representatives to form watch groups to share information about crimes such as metal theft etc and anti social behaviour. A launch took place on the 11th January at Headingley with a number of partners. There are now established periodic meetings with faith groups around this issue.

- 3.24 On going partnership work continues on the Owlcotes/ Wateringcotes area aimed at reducing Anti-social Behaviour and engaging with the local community to organise community events. The Easter event held on 15<sup>th</sup> April 2011 was a huge success with the community. Over 50 local residents attending to participate in a range of activities which included clean-up, planting, installing the mosaic, football coaching, face painting and various games. A further summer event with a sports team during August was well received by the local community as was the Halloween themed event held in the October half – term..

3.25 Operation Northdale took place on Friday 7<sup>th</sup> Oct - Pudsey Town Centre. The aim of the operation was to raise awareness of keeping safe around the evening economy/ and alcohol to:-

- Encourage women to think about how much they are drinking
- Encourage them to stay with their mates – go home together and make sure your mates get home safely
- Keep hold of your drinks and don't leave them unattended or with someone you don't know
- Make sure you get into a licensed cab
- THINK about what you are doing before you do it

Further operations are being planned for the Christmas period.

3.26 During 2011 the Pudsey, Tyersal and Farnley /Wortley Forum/ which are very well attended meetings have been merged with the Police and Community Together (PACT) meetings .The Police continue to support local forums and meetings to engage with communities and to inform them of their work, and to feedback on the local priorities for local neighbourhoods. The merging of meeting is beneficial to partners as it is more effective in terms of resources.

### **3.27 Youth Diversionary Projects**

During 2011 there have been a number of youth work activities in Outer West to divert young people from criminality and Anti-Social Behaviour.

Andy's bars have recently reopened at St Andrew Church Pudsey on a Monday evening. The group are currently decorating the rooms, this is a trial period until Christmas.

The Friday Night project funded by Positive Activities for Young People and the Outer West Area Committee opened on the 4th November at Pudsey Leisure Centre. The Project runs on evenings at a time when ASB is at its highest and aims to reduce this by providing diversionary activities in a place local, safe easily accessible and exciting to young people. There is access to the majority of the leisure centre to enable the project to provide an interesting and varied programme of; sports, arts and crafts, wii, nail art, dance, gym and a safe place to socialise and chill with friends. The project works in partnership with local agencies including; Leeds City Council's Out of School Activities Team, Pudsey Leisure Centre, Youth Service, West Yorkshire Police and Community Safety. The project is funded through Positive Activities for Young People (PAYP) and Area Management Outer West Committee as well as staff-in kind contributions from Out of School Activities Team, Youth Service and West Yorkshire Police.

Just Play based around the Farnley and Wortley area at Farnley Rec has been a great success Tony Edwards is pleased with the response of this football scheme along with FIFA coach.

3.28 Revizit . A Revizt programme is being developed for young people in Pudsey and Farnley area which targets those who are involved in low level offending/ASB. Currently funding options are being explored.

3.29 Off Road Bikes. The cost of this project is shared across the four Area Committee areas, with each Area Committee contributing £1,500 per annum towards the running costs of two vehicles. The Bikes are deployed across the Division to patrol green spaces or to target specific problems. The vehicles are effecting in reducing anti social behaviour and low level crime, particularly on green spaces providing reassurance to those using parks and green spaces. The vehicles have also been used during specific initiatives such as Operation Champion or more focused initiatives in conjunction with the council's Park Ranger Service. A dedicated (answer phone) telephone number has been set up for the service (0113 2395092) to deal with calls about nuisance bikes and this number is publicised in community newsletters and the Police Neighbourhood Policing Team Website.

### 3.30 Outer West Off Road bikes

Police Off Road Motorcycles Funded by LCC West Inner and Outer Area Committees.

Figures for the last quarter (April, May, and June, 2011) regarding nuisance motorcycle calls within North West Leeds Division have seen the following reduction's:-

Apr: - 23% reduction. (Forcewide 11% reduction).

May:-50% reduction. (Forcewide 35% reduction)

Jun: - 14% reduction. (Forcewide 14% reduction).

### 3.31 West Outer

In the last quarter there have been the following nuisance motorcycle calls in the West Outer Ward:-

Apr: - 22 calls, (Force wide 1095).

May: - 12 calls, (Force wide 701).

Jun: - 26 calls, (Force wide 1067).

Wortley:- Very few calls to this area. Frequent Hi visibility patrols are conducted to address the ASB issues in local green space / parks with local youths together with the LCC Parkswatch officers.

Calverley:- Again few calls at this location, being optimistic it may be down to last quarters Operation in the area along with more frequent patrols by the NPT at Bradford.

Woodhall:- Both Calverley and Woodhall still suffer with nuisance motorcycles and ASB as a result of local landowners not securing gates which allow access to the woods for all forms of off road vehicle. The gates at Ravenscliffe Road having been repaired as a result of action by Gill Hunter from Safer Leeds.

Farnley:- , The area around Lawns Lane is still suffering with local youths, despite attending calls as quickly as possible to date we have not seen these bikes / youths or been able to obtain any information as to the riders or there location. The common land off Billey Lane is being used by nuisance motorcycles and quads, with problems on the private land near Mones also on the increase. This majority of these issues are created by youths from the Butterbowl estate.

Pudsey:- There have been very few calls in the Gibraltar Road area and around the Owlcotes.

The Owlcote estate has seen only 1 call for a nuisance motorcycle, regular patrols are constantly made to assure the public and keep the matter that way. Local youths continually complain of nowhere to go on an evening.

There has been an increase in calls from the Daleside estate. The owner of the old golf course has tried his utmost to prevent unauthorised access by blocking a gateway and erecting a barbed wire fence to keep nuisance motorcycles and quads off part of the land. Unfortunately riders and drivers are still using the golf course by simply riding onto the common land off Dick Lane. There are some issues here as to who owns this land and which council, Leeds or Bradford would be responsible to prevent vehicular access. Enquiries are ongoing with council and safer Leeds to address this issue which has been ongoing for the last 5 years.

Tyersal :- This area has also seen an increase in calls this appears to be the knock on to the calls for Phoenix park as it is thought that local youths are riding from Tyersal on public roads and then onto Phoenix park.

Farsley :- Calls here have been reduced to almost nil. Patrols in the park for ASB and under age drinking are made but local residents are happy with Police attendance and action.

The Off Road Bike Team continues working hand in hand with the LCC Park Watch Officers dealing with complaints on all green space areas. The Parks watch officers are always providing valuable intelligence presence and local knowledge.

### **3.32 Leedswatch (CCTV) Delivery in the Outer West Committee Area**

There are currently 14 camera's monitoring the Outer West Area, via the Central CCTV Control Room at Middleton, the Area Committee provide funding towards 11 of the cameras as follows:

- 5 cameras within the Pudsey Ward
- 2 cameras within the Farnley & Wortley Ward
- 4 cameras within the Farsley Ward

The table below gives a breakdown of the typical annual running costs per camera, within the Outer West Area that the Outer West Area Committee part fund. The cost is allocated 50 / 50 between the Community Safety Service and the Area Committee excluding the provision of the BT fibre network which is paid separately by the Area Committee.

Camera	BT Network	Maintenance	YEDL	Monitoring	Total
Pudsey Park		£1,000		£1,000	£2,000
Lidget Hill					
Car Park		£1,000		£1,000	£2,000
Lidget Hill					
Pudsey		£1,000		£1,000	£2,000
Lowtown					
Pudsey		£1,000		£1,000	£2,000
Chapelton		£1,000		£1,000	£2,000
Farsley Park		£1,000		£1,000	£2,000
Town Street					
(Co-Op)		£1,000		£1,000	£2,000
Farsley					
Town Street					
Farsley		£1,000		£1,000	£2,000
Old Road					
Farsley		£1,000		£1,000	£2,000
(Butterbowl)					
Farnley		£1,000		£1,000	£2,000
Cross Lane					
Farnley		£1,000		£1,000	£2,000
<b>Total annual running cost</b>					<b>£22,000</b>
<b>Cost to Community Safety Service</b>					<b>£11,000</b>
<b>Cost to Outer West Area Committee</b>					<b>£11,000</b>

The service is further complimented by two mobile CCTV vehicles which can be deployed to specific 'hot spot' or problematic locations. The vehicles are capable of relaying live images back to the central station.

The allocation of the mobile CCTV vehicles is evenly deployed between the 10 Area Committees throughout the year. The rota for each area is shared with the local NPT at the beginning of each year so that operations can be arranged around its availability. In future this information will be shared with the Area Community Safety Co-ordinators to enable them to influence its deployment by the Neighbourhood Policing Team. The cost of providing the mobile CCTV vehicles is wholly funded via Safer Leeds, no contribution is provided by the Area Committee. The mobile CCTV deployment is decided via the Tasking Group in relation to intelligence provided regarding crime pattern analysis and the reduction of burglary is now a primary objective throughout Leeds.

- 3.33 Leedswatch are now responsible for Out of Hours Noise Nuisance Complaints since 2011, the following table highlights the number of calls received between May and October in the Outer West Area.

#### Out of Hours Noise Complaints

Thornbury	1
Tyersal	
Calverley and Farsley	
Farnley wortley	14
Pudsey Farsley Calverley	81
<b>Totals</b>	<b>96</b>

### **3.34 The Arson Taskforce**

The Arson task force is Part of West Yorkshire Fire & Rescue Service, has undertaken a number of projects in the area working with partners to develop work in hotspots areas and at high risk times such as mischief night and bonfire night. Examples of work undertaken in Outer West include:

- Contributing to environmental audits to identify rubbish which should be removed before it maybe set alight
- Working with schools to highlight the danger and risk of fire, different products are delivered with different year groups in partnership, egg Fire Service and Police shows where the wrong path in life may lead to, working with year 9 in relation to the dangers around bonfire night
- The Possible Arson Targets (PAT) project working with building control to identify empty buildings which could be possible arson targets to make sure they are secure and clear of danger
- Strikeout Campaign which sees the Arson Taskforce, Police and Trading Standards working together to visit commercial premises and remind them of their responsibility in relation to the sale of matches and lighters to underage children, particularly around mischief night / bonfire night

### **3.35 Analysis of Crime Figures**

3.36 Appendix 1 provides an overview of crime figures for Calverley & Farsley Ward The figures presented cover the period April 2009 – March 2010 and April 2010 – March 2011 and relate to all crime types, including Fraud & Forgery, handling stolen goods, sexual offences and other thefts.

Overall crime in this ward has remained at consistent levels over the past 3 years with negligible change. The past year has seen significant reductions in criminal damage to property but has also seen gains in theft from motor vehicles and burglary other than dwellings. The last year has seen 37 fewer house burglaries in comparison to 2009 / 2010.

3.37 Appendix 2 provides an overview of crime figures for the Farnley & Wortley Ward The figures presented cover the period April 2009 – March 2010 and April 2010 – March 2011 and relate to all crime types, including Fraud & Forgery, handling stolen goods, sexual offences and other thefts.

Overall crime in this ward has seen a fall of over 500 recorded crimes since 2008/2009, this represents a significant achievement. There are key reductions in recorded criminal damage and vehicle crime which can be attributed to the work NPTs have devoted to tackling street crime and ASB. There is a slight rise in burglary dwelling overall figures in the past 12 months. Appendix 3 provides an overview of crime figures for Pudsey Ward .The figures presented cover the period April 2009 – March 2010 and April 2010 – March 2011 and relate to all crime types, including Fraud & Forgery, handling stolen goods, sexual offences and other thefts.

3.38 Overall crime in this ward has seen a fall of over 300 crimes since 2008 / 2009 again this represents a significant achievement. There are key reductions in criminal damage, burglary other whilst there is a small rise in burglary dwelling.

3.39 Burglary continues to be a concern for the Outer West area and considerable work is underway to address burglary hotspots. Specific work has begun in the Farnley and Wortley Ward as incidents of burglary has risen and on going work in the Pudsey and Calverley/Farsley wards continues. On going work through the Outer West Multi-agency Tasking work will continue to focus on developing solutions to address these issues. This work will continue through the year and will be complimented by a campaign to raise awareness about the increase in burglary experienced during the winter months.

## **4.0 Corporate Considerations**

### **4.1 Consultation and Engagement**

The projects highlighted in this report will include consultation and engagement under the theme of crime and anti social behaviour with the aim of providing crime reduction advice and to increase reporting.

### **4.2 Equality and Diversity / Cohesion and Integration**

Engagement events and projects take account of equality and diversity in their delivery. Considerations such as date, time, venue, access all have an impact on equality and diversity in relation to ensuring events are accessible to all members of the community.

### **4.3 Council Policies and City Priorities**

Effectively tackling crime and anti social behaviour is a strategic priority in the Safer Leeds Plan 2011-2015.

### **4.4 Resources and Value for Money**

Projects and work highlighted in this report have been funded through a mixture of Safer Leeds, Area Committee, West North West Homes Leeds, and Positive Activities for Young People. Further opportunities for partnership funding will be explored through the coming year.

### **4.5 Legal Implications, Access to Information and Call In**

There are no legal implications or access to information issues for this report. This report is not subject for call in.

### **4.6 Risk Management**

Risk implications and mitigation are considered for each project.

## **5 Conclusions**

5.1 The report outlines the work and progress of the North West Divisional Community Safety Partnership and multi-agency partner tasking, and projects supported through the Area Committee's Well-Being budget. These are projects which assist in supporting the work programme of the Area Management Team.

## **6. Recommendations**

6.1 Members of the Outer West Area Committee are requested to:



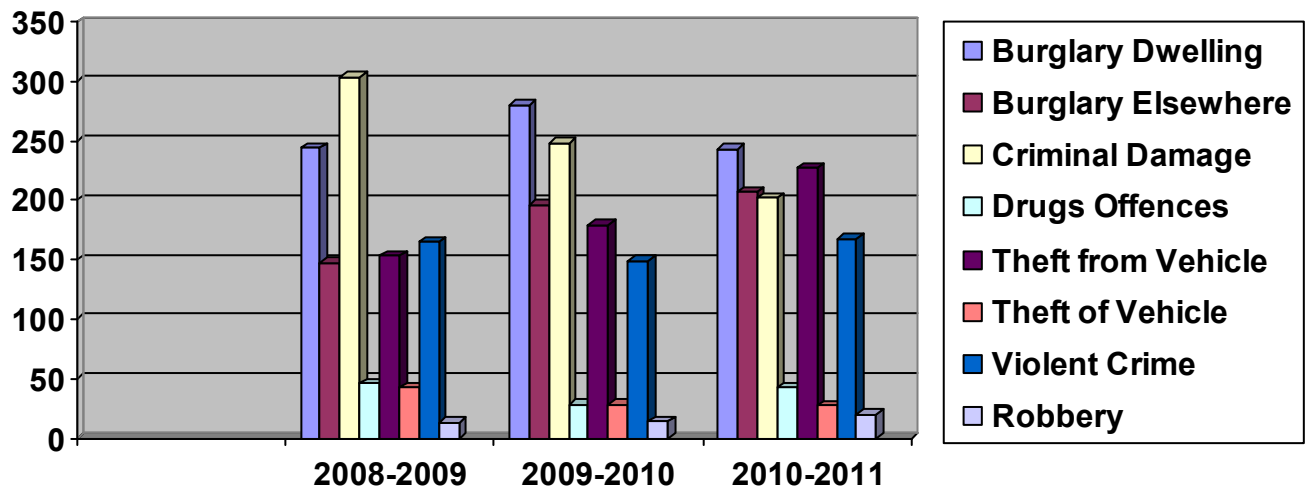
Note the contents of the report and offer comments

## **7 Background documents**

7.1 None

**Ward 8:****No. of Crimes:****Ward 8 - Calverley & Farsley**

Crime	08-09	09-10	10-11	Diff. in 10-11 to 08-09
Burglary Dwelling	244	280	243	-1
Burglary Elsewhere	147	196	207	60
Criminal Damage	303	248	202	-101
Drugs Offences	46	28	42	-4
Fraud & Forgery	108	81	64	-44
Handling	0	1	5	5
Other Crime	19	13	8	-11
Other Theft	391	409	433	42
Robbery	13	14	20	7
Sexual offences	10	6	6	-4
Theft From Motor Vehicle	153	179	227	74
Theft Of Motor Vehicle	42	28	27	-15
Violent Crime	165	149	167	2
<b>Grand Total</b>	<b>1641</b>	<b>1632</b>	<b>1651</b>	<b>10</b>

**No. of ASB Incidents:****Ward 8 - Calverley & Farsley**

08-09	09-10	10-11	Diff. in '10-11 to '08-09
827	804	988	161

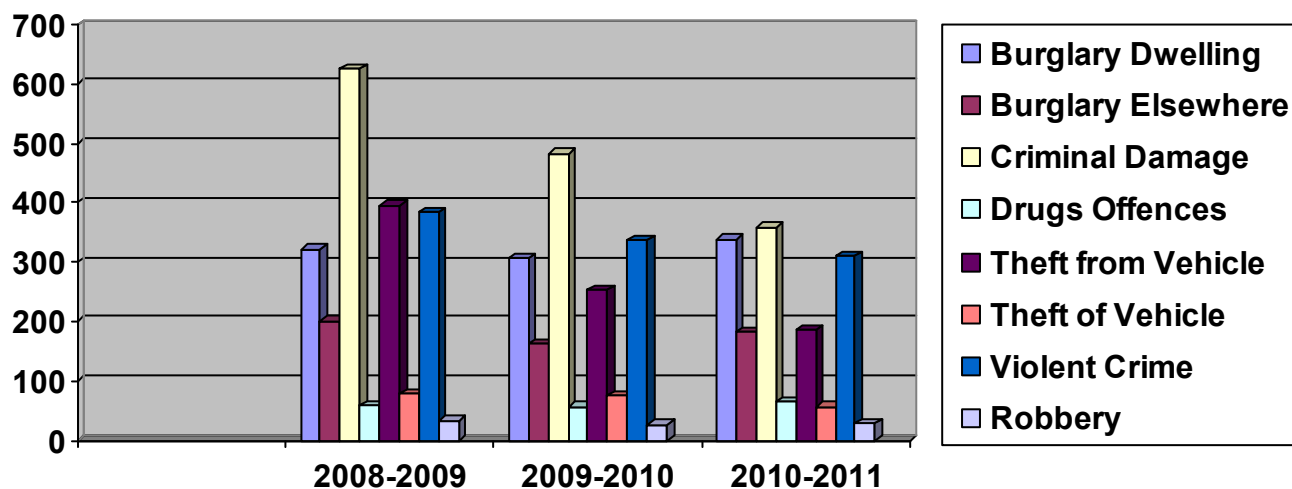
## Appendix 2

### Ward 12:

#### No. of Crimes:

#### Ward 12 - Farnley & Wortley

Crime	08-09	09-10	10-11	Diff. in 10-11 to 08-09
Burglary Dwelling	321	306	348	27
Burglary Elsewhere	200	162	182	-18
Criminal Damage	625	482	358	-267
Drugs Offences	58	57	65	7
Fraud & Forgery	76	78	67	-9
Handling	6	6	3	-3
Other Crime	35	42	34	-1
Other Theft	376	341	442	66
Robbery	32	25	28	-4
Sexual offences	25	17	21	-4
Theft From Motor Vehicle	396	253	185	-211
Theft Of Motor Vehicle	78	74	56	-22
Violent Crime	383	337	309	-74
<b>Grand Total</b>	<b>2611</b>	<b>2180</b>	<b>2098</b>	<b>-513</b>



#### No. of ASB Incidents:

#### Ward 12 - Farnley & Wortley

08-09	09-10	10-11	Diff. in '10-11 to '08-09
1799	1666	1448	-351

Appendix 3

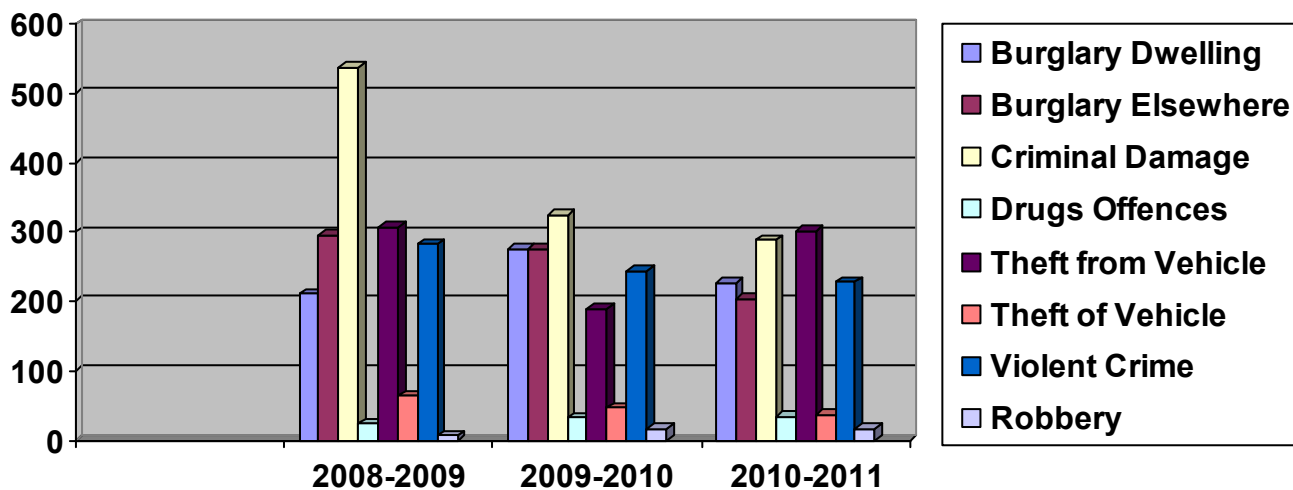
**Ward 28:**

**No. of Crimes:**

**Ward 28 - Pudsey**

Crime	08-09	09-10	10-11	Diff. in 10-11 to 08-09
Burglary Dwelling	211	276	226	15
Burglary Elsewhere	295	276	204	-91
Criminal Damage	537	325	288	-249
Drugs Offences	24	32	34	10
Fraud & Forgery	25	31	22	-3
Handling	6	2	3	-3
Other Crime	23	20	20	-3
Other Theft	295	309	367	72
Robbery	7	16	16	9
Sexual offences	8	13	9	1
Theft From Motor Vehicle	307	189	302	-5
Theft Of Motor Vehicle	64	47	36	-28
Violent Crime	283	244	228	-55
<b>Grand Total</b>	<b>2085</b>	<b>1780</b>	<b>1755</b>	<b>-330</b>

**No. of ASB Incidents:**



**Ward 28 - Pudsey**

08-09	09-10	10-11	Diff. in '10-11 to '08-09
1130	1189	987	-143

**West Outer Overall Public Confidence in Policing Levels**

**West Outer (Wards 8 , 12 & 28)**

Apr-09	Apr-10	Apr-11	Diff. in '10-11 to '08-09
46.2%	54.9%	57.6%	11.4%